

# BIRTHDAY PARTIES



2023

# HOW IT WORKS

**READ THIS BROCHURE  
& CHOOSE YOUR  
PARTY TYPE**

**DECIDE ON YOUR GUEST  
NUMBERS**

**SELECT YOUR PARTY ADD-ONS**

**RESERVE YOUR DATE AND TIME  
& SUBMIT YOUR REQUEST**

**WILDLINGS WILL CONFIRM YOUR DETAILS  
VIA EMAIL & REQUEST A BOOKING DEPOSIT  
PAYMENT**

# PARTY TYPES

## PURELY NATURE PLAYTIME

More playtime, self-guided,  
lower cost  
2.5hr time slot  
Children 2yrs+

## ADVENTURE PARTY

Up to 75 mins guided games  
& nature activities  
2hr timeslot  
Children 4-10yrs

## CAMPFIRE PARTY

Up to 75 mins guided  
games & campfire  
activities  
2hr timeslot  
Children 6-12yrs

## EXCLUSIVE PARTY

Up to 90 mins guided games  
& nature activities. Bespoke  
premium programme.  
2.5hr timeslot  
Children 2-10yrs

# ALL PARTIES

What's included?



Drinking water



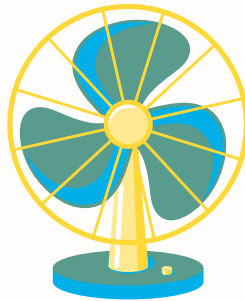
Private party tent



Speaker to play your own music



Simple party decor



Cooling fans



Activity booklet



Mosquito Spray



Gift for birthday child



# PURELY NATURE PLAYTIME

Do you have  
enough adults?  
Check our safety  
ratios on page 15

We'll provide all of the items in 'What's Included?' for you to enjoy 2.5hrs of self-guided nature playtime in our nature space, at your own child's pace doing your own thing your style.

\$30 per child  
\$5 per adult  
\$500 minimum spend

You can include up to 25 people in your party. Your party must include enough adults to supervise the children and keep them safe and our environment protected (see page XX for ratios). If you would like more guests please book an exclusive party. If you would like facilitated games and activities please book an adventure party or book an externally provided activity, see page 11.

Nature Playtime is suitable for children aged 2 to 10yrs. Please see [www.wildlings.sg/nature-play](http://www.wildlings.sg/nature-play) for details.



Do you have  
enough adults?  
Check our safety  
ratios on page 15

# CAMPFIRE PARTY

We'll provide all of the items in 'What's Included?' plus a programme of games and campfire focussed activities, including cooking a yummy item on the fire, lasting up to 75 minutes (the time depends on how quickly the children complete them and the size of your party). The rest of the time is for arrival, party food, cake, and self-guided play.

\$45 per child  
\$5 per adult  
\$550 minimum spend

You can include up to 30 people in your party, with a maximum of 20 children aged 6-12 yrs. Your party must include enough adults to supervise the children and keep them safe and our environment protected (see page 15 for ratios).

All of our Nature Playtime activities are also available for your self-guided playtime. Please see [www.wildlings.sg/nature-play](http://www.wildlings.sg/nature-play) for details. You can extend your party with 30 minutes extra playtime with our party add-on.

Choose:

- a) Marshmallow toasting, or
- B) Sweet bread on a stick with chocolate spread





# ADVENTURE PARTY

Do you have  
enough adults?  
Check our safety  
ratios on page 15

We'll provide all of the items in 'What's Included?' plus a programme of games and nature activities lasting up to 75 minutes (the time depends on how quickly the children complete them and the size of your party. Smaller parties will take about 60 minutes to complete the activities). The rest of the time is for arrival, party food, cake, and self-guided play.

Most activities will be chosen by our facilitators but you can customise your party with one 'Your Choice' activity (additional costs may apply, see pages 10-11).

\$45 per child  
\$5 per adult  
\$550 minimum spend

You can include up to 30 people in your party, with a maximum of 24 children aged 4-10yrs. Your party must include enough adults to supervise the children and keep them safe and our environment protected (see page XX for ratios).

All of our Nature Playtime activities are also available for your self-guided playtime. Please see [www.wildlings.sg/nature-play](http://www.wildlings.sg/nature-play) for details. You may extend your playtime by 30 minutes with our party add-on.



# EXCLUSIVE USE PARTIES

Do you have enough adults?  
Check our safety ratios on page 15

Book Wildlings exclusively for you and your guests, you will have our whole 1.25acre nature space for your use!

We'll provide all of the items in 'What's Included?' plus we will design a bespoke programme of games and nature activities lasting up to 90 minutes for your party. Your party also includes up to 60 minutes of self-guided playtime.

One 'Your Choice' activity is included in the price. Additional activities will be at an additional cost, see pages 10-11.

The rest of the time is for arrival, party food, cake, and self-guided play. You may arrive 30 minutes early to set-up.

\$1250 minimum spend

You can include up to 70 people in your party, with a maximum of 40 children aged 4-10yrs. Your party must include enough adults to supervise the children and keep them safe and our environment protected (see page 15 for ratios).

All of our Nature Playtime activities are also available for your self-guided playtime. Please see [www.wildlings.sg/nature-play](http://www.wildlings.sg/nature-play) for details.





# YOUR CHOICE ACTIVITIES

You can customise your party with a 'Your Choice' activity!

Adventure Parties: select one activity. Additional costs may apply.

Exclusive Use parties: select one activity (included in the price). Additional and external activities incur an additional cost and are subject to availability. The lowest cost activity would be included in the price.

Purely Nature Play Parties: Only externally provided activities are available. Please contact us if you would like to bring in an alternative external provider to those listed below.

Campfire parties: you may select the 30 minutes of additional playtime option only.

Enter your selection where indicated on the party booking form.

## NO EXTRA COST



Shelter building  
competition



Flower & Leaf  
Bashing Craft



Chicken meet and greet



Bug Hunting



Parachute Games



Wild Foraging

Capacity Note  
Children may be split into  
groups to rotate  
participation in activities

Premium  
Activities

# YOUR CHOICE ACTIVITIES

## \$5 PER CHILD



Max. 20 pax

Big 'Potion' Making



Mini-Garden (no theme)



Max. 18 pax

Erupting Volcano Making



Max: 150cm,  
45kg

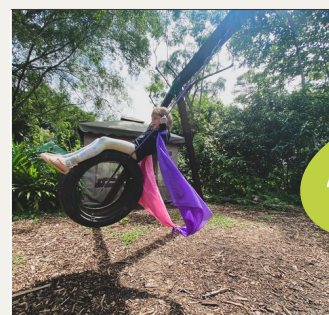
Slip-n-Slide



Max. 20 pax

Sword/Wand Making

# SINGLE PRICE



\$100  
Adventure & Campfire  
parties only

30 mins extra playtime



Premium  
Activities

# \$10 PER CHILD



Wormeries



Min. 6yrs

Colour Fight (all-natural  
colour powders)



Max. 20 pax

Fairy themed mini-garden



Marshmallow toasting

## EXTERNALLY PROVIDED ACTIVITIES



From \$200

1hr Kidmando Party



From \$275

45 min Party  
Entertainer



For more photos see  
[wildlings.sg/nature-play](http://wildlings.sg/nature-play)

# OUR VENUE

## PARTY TENT PICTURES



NEW! 63sqm party tent  
with lightning  
protection system for  
rain or shine parties



Central area available  
for party food (exclusive  
parties only)



# OUR VENUE

## PARTY TENT PICTURES



Example party tent  
25 pax capacity  
Parties booking our slip-n-  
slide and mid-day parties  
are often based here.



Example party tent  
20 pax capacity  
Our campfire parties are  
located in this tentage.



For more photos see  
[wildlings.sg/nature-play](http://wildlings.sg/nature-play)

# OUR VENUE

## PARTY TENT PICTURES



Covered campfire area &  
extension to 20 pax party tent  
to 30 pax  
Campfire parties will be  
located here.

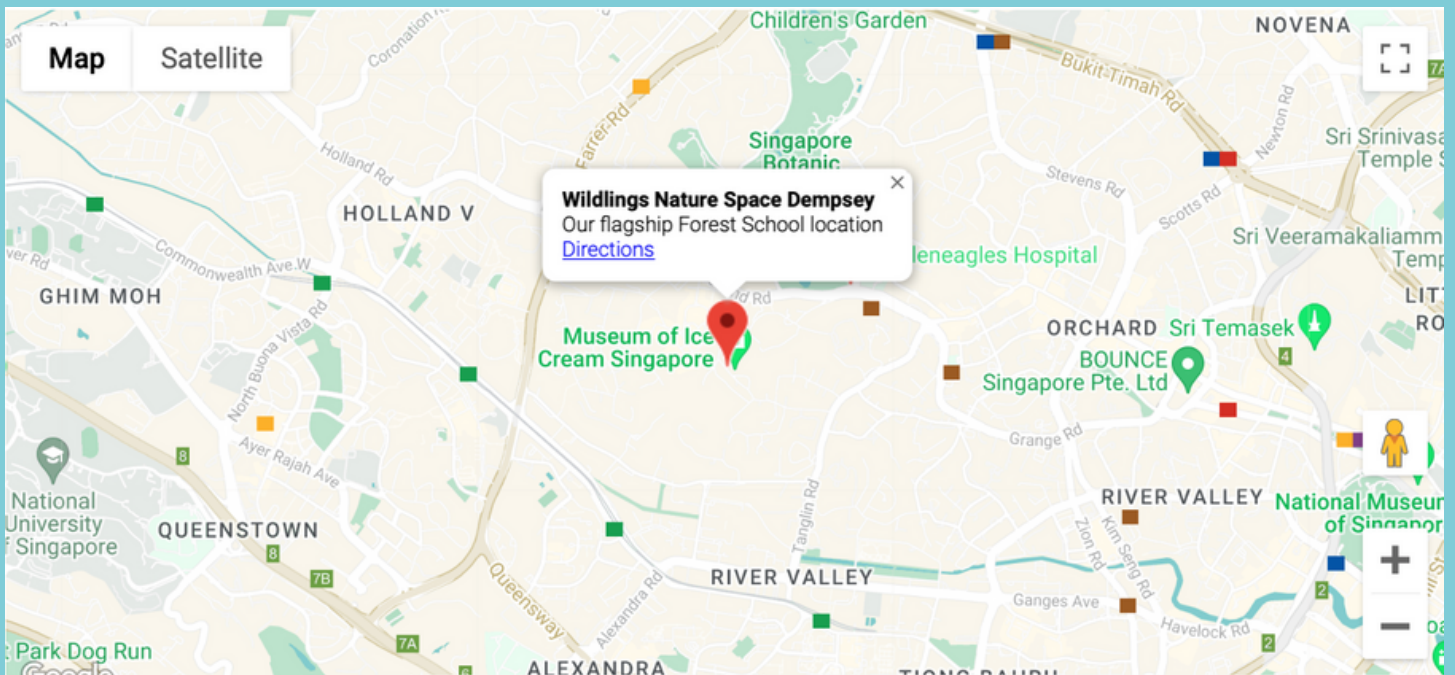


View of part of  
Wildlings' 1.25 acre  
nature space from the  
climbing tower



For more photos see  
wildlings.sg/nature-play

# WHERE IS WILDLINGS?

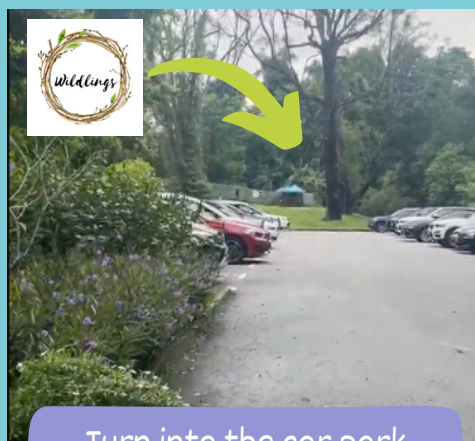


## ADDRESS

27A Loewen Road  
Singapore 248839



Look for Core Collective



Turn into the car park



Find our gate at the end of  
the car park

# FREQUENTLY ASKED QUESTIONS

## How do I book?

Please make a date and time slot request and provide us with your party details here: [www.wildlings.sg/ourevents](http://www.wildlings.sg/ourevents)

We will then be in contact as soon as possible, Monday to Friday, to discuss your request.

You can [Contact Us](#) with any queries prior to making a request.

## How and When do We Pay?

Once details are confirmed we will issue an invoice for a \$100 non-refundable booking deposit.

Your date and time is not guaranteed for you until this deposit has been paid.

Final payments are due 14 days in advance. If your guest numbers change after this date please note that no refunds will be given as staffing and resources will already have been allocated to your party.

Invoices can be paid via credit card, PayNow, or Bank Transfer and details will be provided on your invoice.

Your invoice will be emailed to your registered customer email address. Please ensure your email address is entered correctly.

## Do you offer drop-off parties?

A drop-off party is a party where no adults will attend and Wildlings staff will look after all of the children. Children must be 6 years old for a drop-off party. We will need extra staff so additional costs will apply. Please tick the box on the booking form if you would like to explore this option.

## How many guests can we have?

Please refer to our party descriptions on pages 4 to 7 for details. These capacities are tied to our tentage sizes and are non-negotiable.

## How many accompanying adults do we need?

- Children aged 4-5yrs need at least one adult per four children
- Children aged 6-7yrs need at least one adult per six children
- Children aged 8yrs+ need at least one adult per eight children

If you have children in two different age groups attending the party, i.e. 5 and 6 year olds, then please provide enough adults for the 4-5yrs ration.



### What activities will you run for my party?

- Activities commence 15 minutes into the party once most guests have arrived.
- Campfire parties involve an activity programme designed around the campfire experience. There is a game, fire lighting experience and campfire cooking. Campfire parties are capped at 20 children.
- Adventure parties include one hour of games/nature activities and a 'Your Choice'. This may run longer than 60 minutes but no more than 75 minutes. The rest of the time is for arrival, self-guided play, party food, etc
- For exclusive parties we may have larger numbers of children and so we will contact you to design a party that will be suitable for the age and number of children attending.
- Games will be age appropriate and based upon a number of factors, including weather conditions, so are decided upon by the party host on the day.

### We don't want self-guided play and time for food. Can we have more activities?

Self-guided nature playtime is part of our party offering. We guarantee a minimum of 60 minutes of facilitated activities, and a maximum of 75 minutes. We regret we are unable to offer more facilitation than this.

### What do children do during self-guided playtime?

Please see [www.wildlings.sg/nature-play](http://www.wildlings.sg/nature-play) for details.

### When can we have the extra 30 minutes of playtime add-on?

The 30 minutes of extra playtime is available depending on the type and time of your party. Adventure and Campfire parties are 2 hours in duration and so we can offer 30 minutes of extra self-guided play to extend your party time. Purely Nature Play and Exclusive parties are already 2.5hrs in duration and therefore 30 minutes of extra playtime is not possible.

Thursday Parties | 4.00-6.00pm | Extra playtime available 3.30-4.00pm

Friday Parties | 4.00-6.00pm | Extra playtime available 3.30-4.00pm

Saturday Parties | 12.00-2.00pm | Extra playtime is NOT AVAILABLE for this time slot

Saturday Parties | 3.00-5.00pm | Extra playtime available 5.00-5.30pm

Sunday Parties | 12.30-2.30pm | Extra playtime is NOT AVAILABLE for this time lot

Sunday Parties | 3.00-5.00pm | Extra playtime available 5.00-5.30pm

### We would like a purely nature playtime party but with one 'Your Choice' activity, is this possible?

We can provide an age appropriate Your Choice activity for children aged 2 and 3 years old as they are too young for our adventure parties. Please make a request in the party form and we will contact you with options.

For children aged 4yrs and above, please book an adventure party.

You may also book an external provider for your party. Please see page 11. You may also request your own external provider.

#### What is Kidmando?

Please see [www.kidmando.com](http://www.kidmando.com)

#### What is Lucy Sparkle Party Entertainment?

Please see [www.lucysparkles.com.sg/kids-party-entertainers/](http://www.lucysparkles.com.sg/kids-party-entertainers/)

Available for mid-day parties and exclusive use parties only.

#### Can you do joint parties?

Yes, as long as the children are no more than 3yrs in age apart. Please contact us to see if we can accommodate your party in our programmes described in this brochure. There will only be one activity programme provided. If you would like multiple activities and your children are a greater age apart, please contact us to see if we are able to run two separate parties, but at the same time.

#### Can we choose our party tent?

Your party tent will be chosen for you based upon your 'Your Choice' activity choice and size and time of your party and other bookings we have that day. We regret that customers who have not booked our venue exclusively can not choose their party tent.

#### Can we decorate?

We provide simple party decorations and our nature space requires very little decoration. You may bring some simple decorations but please ensure you remove them after your party. Balloons are not allowed as they are not appropriate for use outdoors.

#### When can we arrive?

Please arrive no more than 30 minutes before your party is due to start. We will only admit the party family and their helpers at this time. Guests will be admitted at the allotted booked time for the party.

#### When do we need to leave?

Please vacate the Wildlings premises no more than 15 minutes after the end of your party time slot.

#### Can we bring a piñata?

Exclusive use parties only may bring a piñata.

#### When should we time food?

Food should be timed for 1hr and 15 minutes into the party.

#### What happens if it rains or there is a storm?

Don't panic. We will call you if there is an alteration to plans.

Your party is our priority and we will ensure it goes ahead whatever the weather for your child as this is their special day. We have an all weather shelter with a lightning protection system, and will adapt your party plan accordingly to manage in whatever weather conditions we may face.

This may involve a small 30 minute delay in the start time should we experience bad weather about one hour before your party is due to start. In bad weather all additional adults surplus to safety requirements may be asked to vacate the premises until the weather has passed so that we can focus on the party and the children and allocate the sheltered space to them. There is a bistro onsite where adults can seek refuge as well as covered outside spaces at Core Collective. If we are unable to run your chosen add-on activity we will select another one that we can run in our sheltered tentage.

For exclusive parties we will confirm a bad weather plan with you in advance.

#### What should we tell our guests to wear?

Please see [www.wildlings.sg/nature-play](http://www.wildlings.sg/nature-play) for details in the FAQ section. You may send this link to your guests for convenience.

#### Do you provide an invitation?

We do not currently provide a birthday party invitation.

#### Can we bring any food we like?

We can not accommodate hot buffets or live cooking stations, including popcorn, candy floss and ice cream, for birthday parties. We do not have a kitchen, nor chiller to keep cakes cold. We recommend that food is kept simple and focusses on the children and not the adults. We are a predominantly outdoor venue and this should be considered when selecting food. We ask customers to consider waste and try to reduce food and packaging waste as much as possible.

The easy option available is pizzas from Plank Pizza which is right next door.

#### Do you have plates, cups and cutlery?

We do not provide these.

#### Can you keep my cake cold?

We do not have a cooler. Parents have in the past bought cakes in eskies with ice packs and this has worked well. We recommend bringing cake boxes for children to take cakes home as they often do not want to stop playing to eat!

Can we bring alcohol for adults?

Yes

What are your terms and conditions?

Please see [www.wildlings.sg/policies](http://www.wildlings.sg/policies)

Can we bring a videographer?

Yes. You may not take videos of our staff without their consent.

Can we take photos / bring a photographer?

Yes. You may not take photos of our staff without their consent.

Do we need to provide you with a guest list?

Yes we require a guest list of those staying in our premises and forming part of the party. We will provide you with wrist bands for your guests and these must be worn at all times.

Do we need to sign a waiver?

Yes all adults must sign our accompanied waiver before their child can attend a party at Wildlings.

Adults can also sign the waiver at the gate.

You can find the waiver here: [www.wildlings.sg/accompanied-waiver](http://www.wildlings.sg/accompanied-waiver)

Adults may be asked for their name so that we can check that the waiver has been signed.